

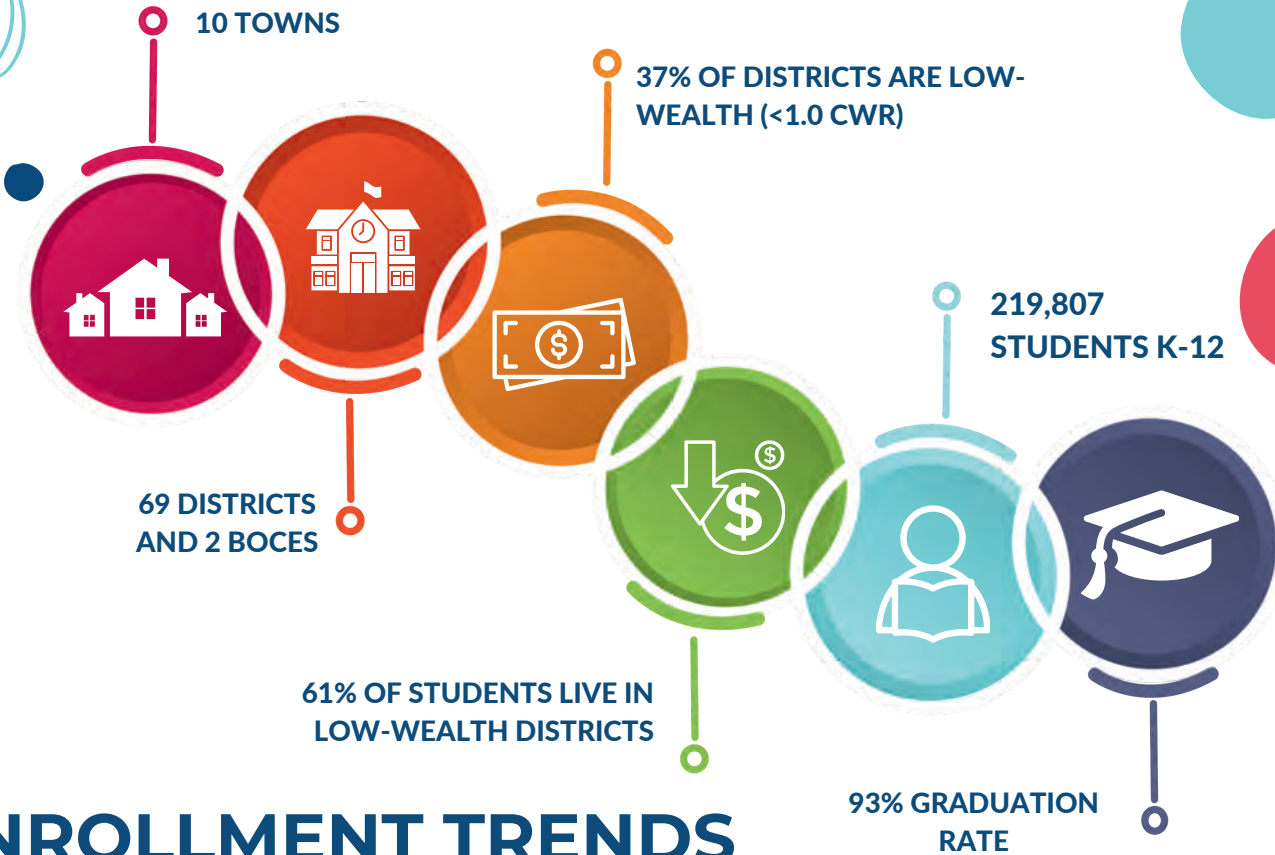


2023-24

SUFFOLK COUNTY **OUR STORY**

AN IN-DEPTH ANALYSIS OF THE FACTORS INFLUENCING
THE LOCAL PUBLIC EDUCATION SYSTEM

Dating back to 1683, Suffolk County was one of New York's original counties. It encompasses roughly two-thirds of Long Island, covering an area of approximately 1,000 square miles and boasting 980 miles of coastline. The county is home to 10 towns; several villages; four institutions of higher education, Five Towns College (established in 1972), Saint Joseph's University (established in 1916), Stony Brook University (established in 1957) and Suffolk County Community College (established in 1959); Brookhaven National Laboratory; and the Poospatuck and Shinnecock Native American reservations. Suffolk County's public schools serve nearly 220,000 students in grades K-12 across 69 school districts and 2 BOCES. Thirty-seven percent of these districts fall under the low-wealth bracket, with a combined wealth ratio below 1%. Furthermore, 61% of Long Island's students reside in low-wealth districts.

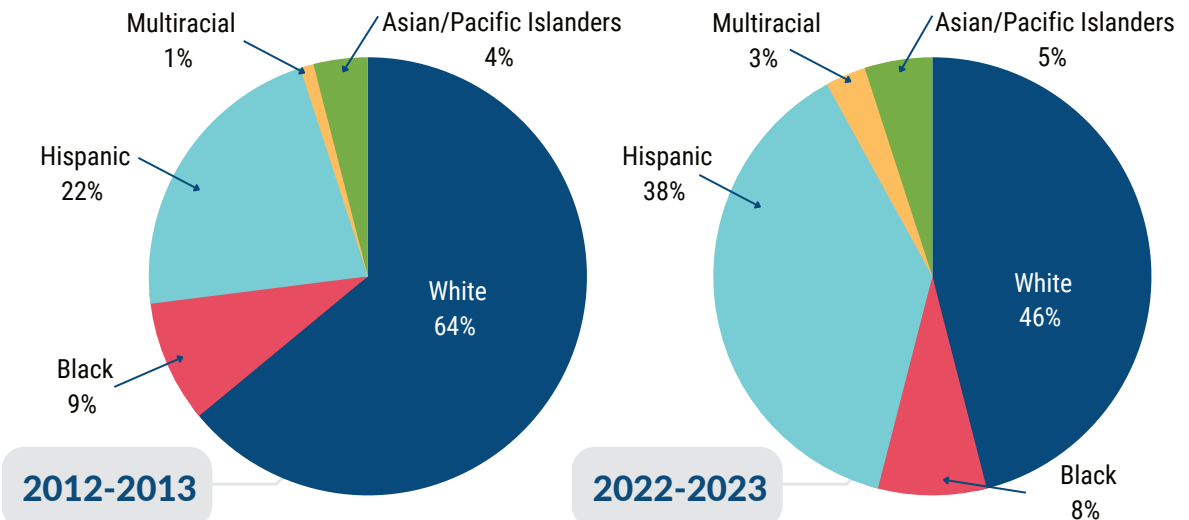


ENROLLMENT TRENDS

Changing Demographics in Our County's Schools

Over the past 10 years the enrollment in Suffolk County's schools has seen considerable demographic shifts. In particular, the white and black student populations have seen decreases from 64% to 46% and 9% to 8% respectively, in that time.

In addition, we have seen a dramatic increase in our Hispanic population, rising from 22% to 38%. Multiracial and Asian/Pacific Islander students also increased from 1% to 3% and 4% to 5%, respectively.



RISING COSTS

High-Cost Students: English Language Learners and Students with Disabilities

Suffolk County has seen an increase in the numbers of Students with Disabilities and English Language Learners. Students with Disabilities in our schools have risen from 14% to 17% while our English Language Learners population has doubled from 6% to 12%. Increases in these populations result in higher costs to districts. Due to restrictive regulations around the education of these students costs have been driven up significantly over the past 10 years. In addition, we have witnessed an increase in economically disadvantaged students, up from 30% to 44% in that 10-year period.

POINTS OF *Pride*

Despite increasing challenges, our Suffolk County students continue to outpace the state and nation in key indicators of academic achievement. Suffolk's students outperform their counterparts in high school graduation rates, Regents and Advanced Regents Diploma rates.*

Graduation Rate

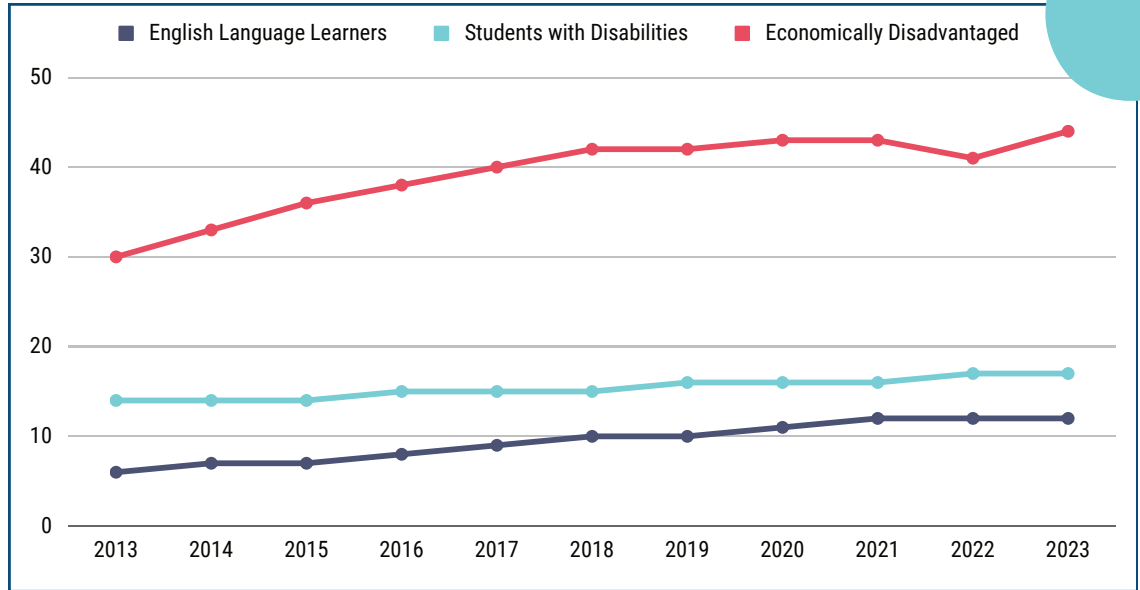
Suffolk County: 93%
Rest of State: 91%
United States: 87%

Regents Diploma (Total)

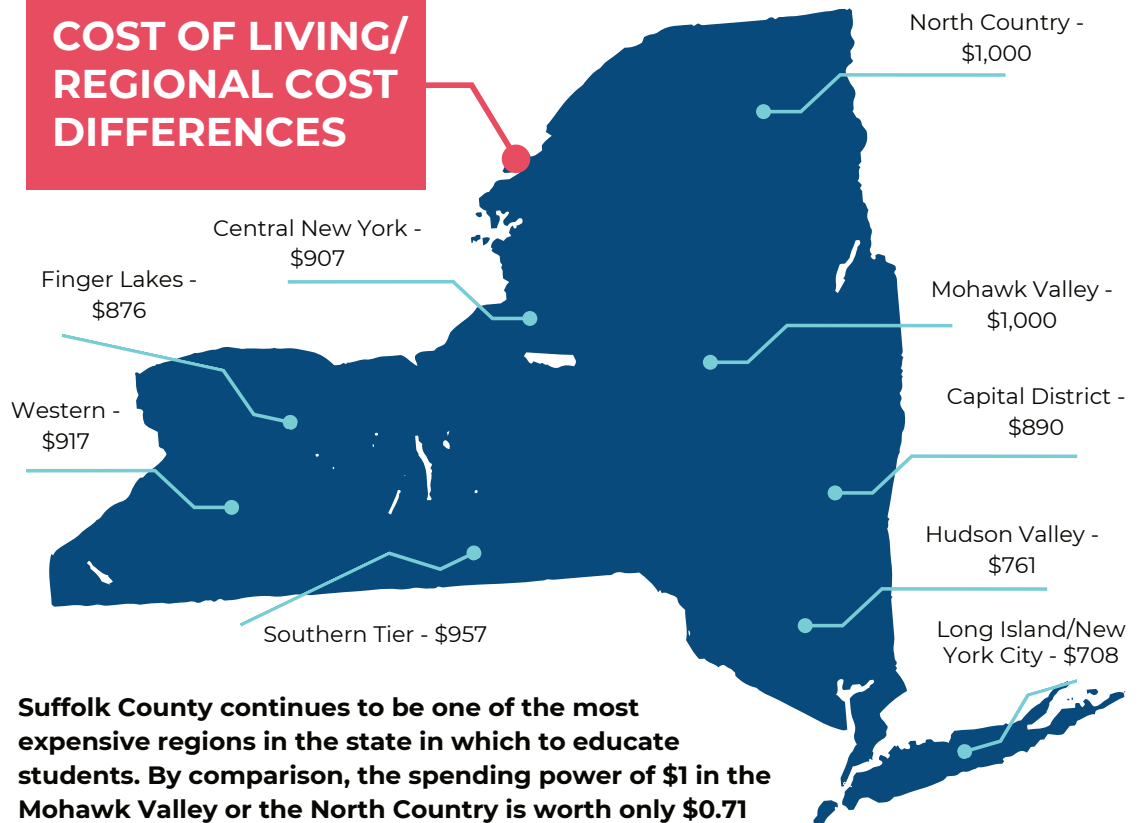
Suffolk County: 91%
Rest of State: 88%

Advanced Regents Diploma

Suffolk County: 56%
Rest of State: 45%



COST OF LIVING/ REGIONAL COST DIFFERENCES



Suffolk County continues to be one of the most expensive regions in the state in which to educate students. By comparison, the spending power of \$1 in the Mohawk Valley or the North Country is worth only \$0.71 in Suffolk. The map illustrates the regional cost differences in the various regions of New York State.

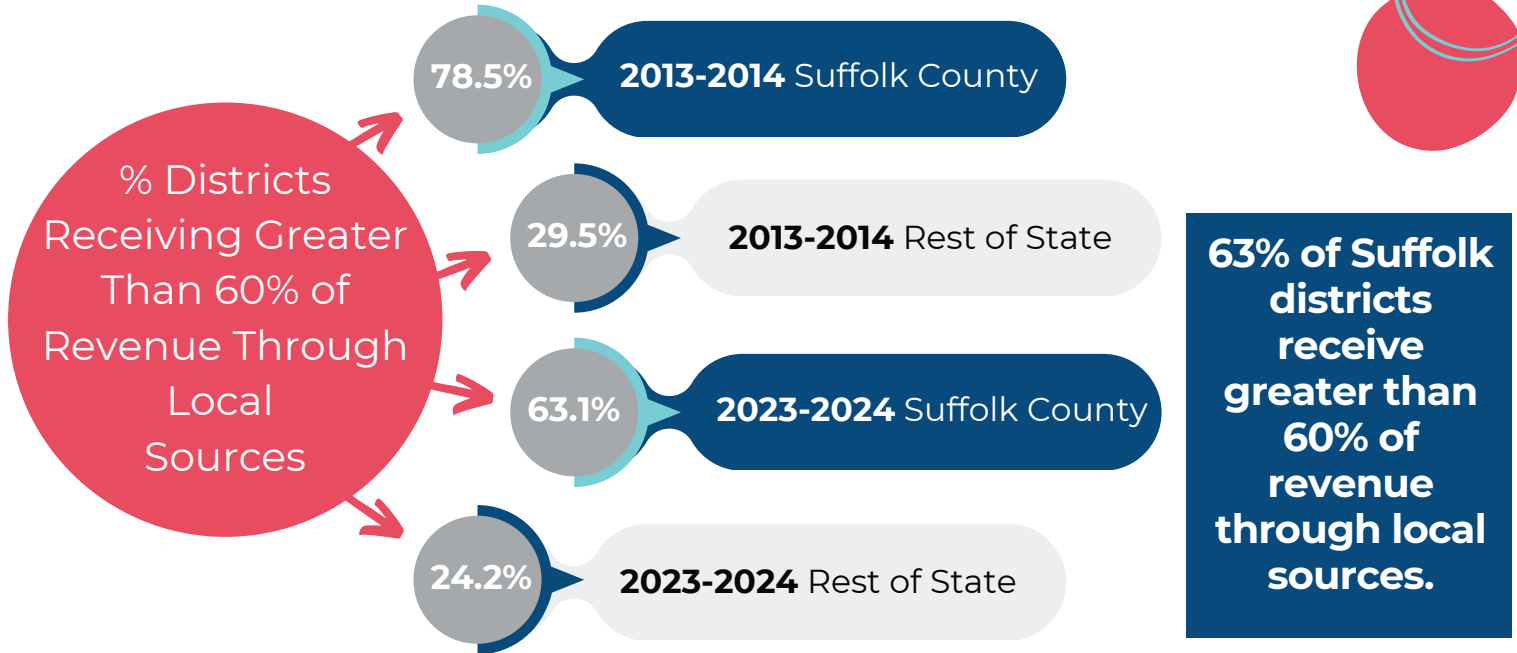
*Last updated 2014 - NYS Division of Budget

*Data excludes New York City

SCHOOL FINANCE

Inequitable Funding

Suffolk County taxpayers continue to pay a larger share of their school district expenses than their counterparts throughout the state. Despite the full funding of Foundation Aid, 41.5% of Long Island school districts fund greater than 70% of their budgets through local sources as compared to 12.4% amongst the rest of the state. Further, 63% of our Suffolk County Schools relied on local sources for more than 60% of their revenue from local sources as opposed to 24% in the rest of our state.



Wealth Category	Combined Wealth Ratio	Number of School Districts*	Student Enrollment	Percent of Total Enrollment
High Wealth	>2.0	20	12,566	6%
Mid Wealth	1.00 – 1.99	21	71,791	33%
Low Wealth	<1.00	24	134,554	61%

*Number of school districts does not include those with no Combined Wealth Ratio.



SCSSA LEGISLATIVE COMMITTEE CO-CHAIRPERSONS

Dr. Lance Lohman, Longwood CSD
Dr. Ronald Masera, Center Moriches UFSD

www.suffolksuperintendents.org